

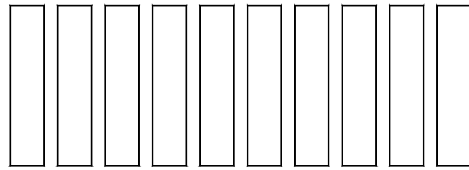
ClassicRustic™



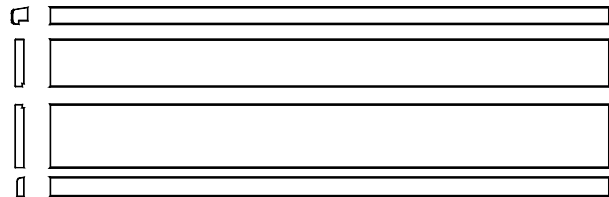
ClassicRustic™ is crafted with pillow edged rails, chair rail and panels. Each component is hand scraped, carved and finished to portray a rugged timeless beauty.

ClassicRustic™ Components are packaged for convenient ordering, handling and use.

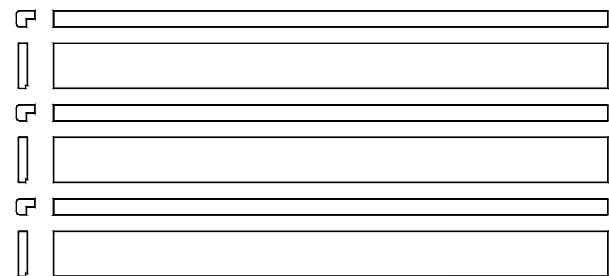
PanelSet® Available in 5" x 23" or 5" x 31" panel sizes.
Each package contains:
10 panels = 4 feet lineal wall coverage



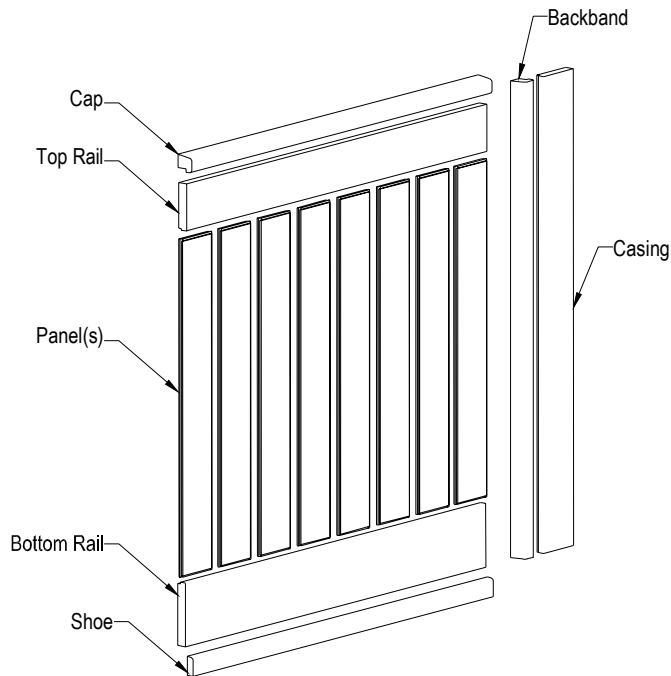
FramePak® Available in 96" lengths.
Each package contains:
1- Cap
1- Rail
1- Bottom rail
1- Shoe



CasingPak® Window and door trim designed to match. Available in 96" lengths.
Each package contains:
3- Cap
3- Rail

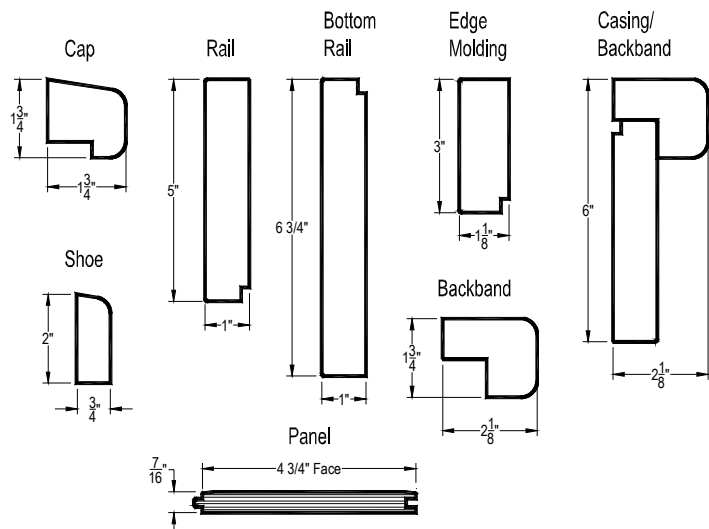


ClassicRustic™ System



ClassicRustic™ system is available in two standard heights.
36" Height = FramePak® + 23" Rustic PanelSet®
44" Height = FramePak® + 31" Rustic PanelSet®
Other heights available per custom order request.

ClassicRustic™ Components



Product Specifications

PART 1.0 GENERAL

1.1 DESCRIPTION

A. Wood wainscoting and wall panel systems shall be the ClassicRustic panel system manufactured by the New England Classic, Inc. Company

1.2 SUBMITTALS

B. Submit manufacturer's literature and installation instructions to determine layout requirements

1.3 DELIVERY, STORAGE, AND HANDLING

A. Delivery of Product: The ClassicRustic panel system shall be delivered to the job site in the manufacturer's original packaging with the manufacturer's identification intact and legible.

B. Storage & handling: The ClassicRustic panel system shall be stored and handled in such a way to protect against contact with water, exposure to weather, breakage and damage.

Do not store directly on concrete without a plastic sheet as a moisture barrier.

1.4 LIMITATIONS

A. Moisture Conditions: the ClassicRustic panel system shall not be used in wet or damp areas.

B. Temperature conditions: The ClassicRustic panel system shall not be used in contact with surfaces where temperatures exceed 120° F.

PART 2.0 PRODUCTS

2.1 ACCEPTABLE MANUFACTURER

New England Classic®, Inc.
3 Adams Street
South Portland, Maine
04106

2.2 MATERIALS

A. Substrate shall be industrial grade class 1 (fire retardant) or 3, or moisture resistant MDF, product class MD, or EFBWheatboard (particleboard) product class M3, that conforms with ANSI A208.2-1994.

Panel substrate shall be 7-ply veneer core plywood, bonded with Type II adhesive in accordance to ANSI/HPVA HP-1-1994.

B. Adhesive for bonding veneers to substrate shall be PVA, EVA, or PUR type adhesive.

C. Real wood veneer shall be grade-B, hand scraped and carved to a "Medium" distressed level per NEC visual specifications.

D. Factory finish shall be either lacquer or conversion

varnish per Architectural Woodwork Institute (AWI) Custom Grade Specifications: TR-2 and OP-2 for lacquer, and TR-4 and OP-4 for conversion varnish finish.

2.3 COMPONENTS

A. Panel:

5" x 23¹/₂" x 7⁷/₁₆" thick
5" x 31¹/₂" x 7⁷/₁₆" thick

B. Cap:

1³/₄" x 1³/₄" x 96" long

C. Top & Casing Rail:

1" x 5" x 96" long

D. Base Rail:

1" x 6³/₄" x 96" long

E. Shoe:

3³/₄" x 2" x 96" long

F. Edge Molding:

1¹/₈" x 3" x 34³/₄" long
1¹/₈" x 3" x 42³/₄" long

PART 3.0 INSTALLATION

3.1 INSTALLATION

A. Install product per the manufacturer's installation recommendations using the instructions provided with the product.

3.2 WARRANTY

A. Manufacturer shall furnish

a five year warranty against defects in the material and workmanship.

3.3 MATERIALS

ACCECPTANCE

A. City of New York
MEA 190-99-M

PART 4.0 FINISHING & MAINTENANCE

4.1 UNFINISHED

A. Fill all nail holes and splices with matching wood filler. Sand wood filler patches smooth to the veneer surface with 180 grit paper, taking care not to sand through the veneer. Apply stain, sealer and clear finish coat, lightly sanding between coats with 220 grit paper. We recommend applying a light coat of lemon oil or furniture oil to replenish the natural sheen, especially in dry environments.

4.2 FINISHED

A. Use matching color putty to fill fastener holes. A matching stain kit is included with finish product.



What better walls are searing

New England Classic, Inc
3 Adams Street
South Portland, Maine 04106
(888) 460-5324
Fax (207) 799-6073
NewEnglandClassic.com

Distributed By: